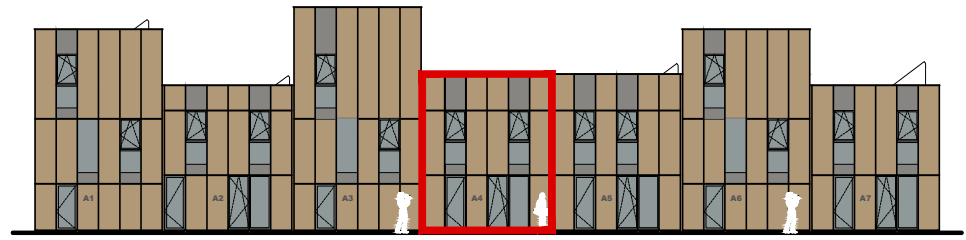
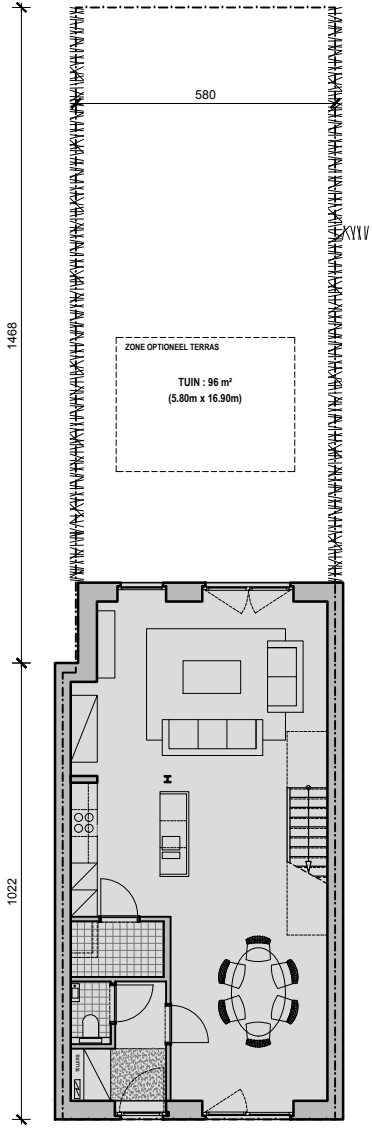


ACHTERGEVEL

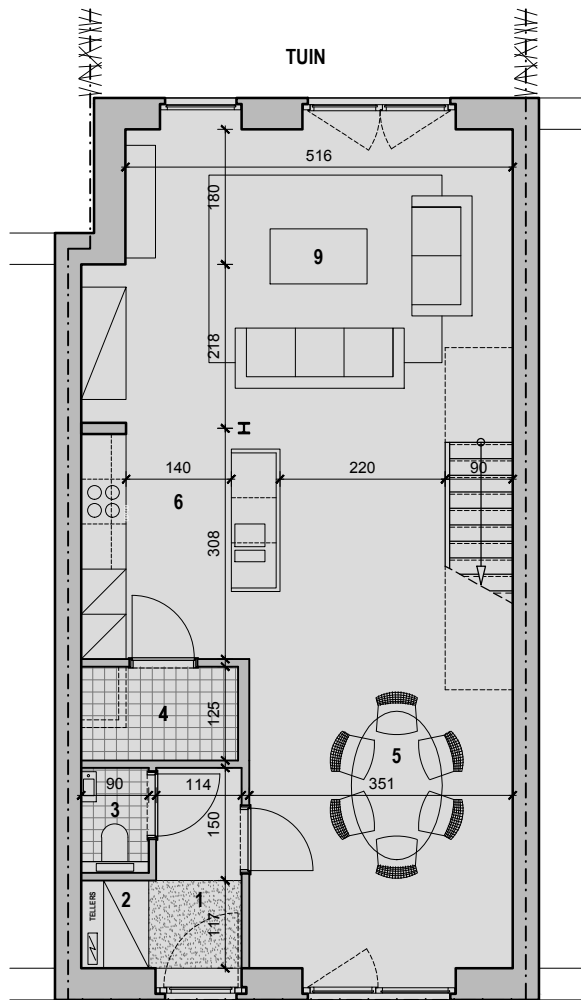


VOORGEVEL

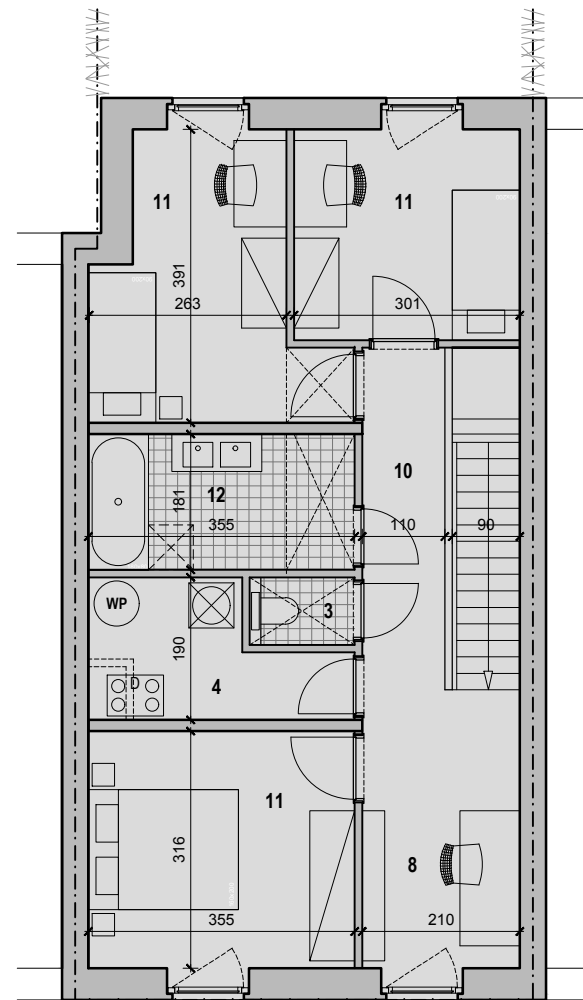
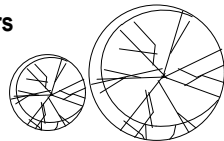


BLOK A - WONING A4

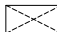




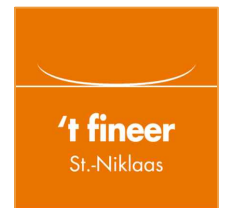
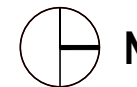
WONING A4 : gelijkvloers



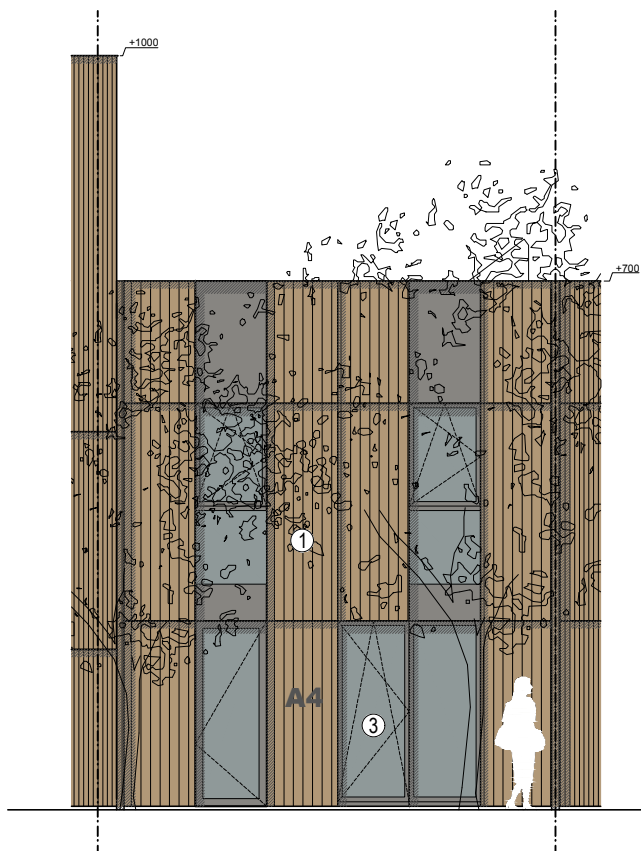
WONING A4 : nivo +1

 zone verlaagd plafond

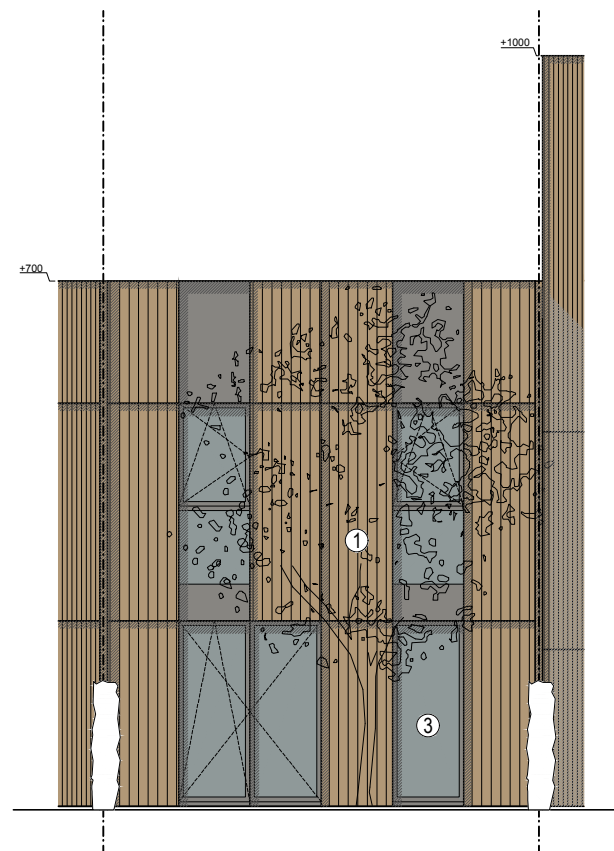
- | | |
|-----------------------|----------------|
| 1 inkom | 7 vide |
| 2 vestiaire | 8 bureauruimte |
| 3 toilet | 9 zitruimte |
| 4 wasplaats / berging | 10 nachthal |
| 5 eetruimte | 11 slaapkamer |
| 6 keuken | 12 badkamer |



WONING A4
145,4m² + 74,8m² TUIN



VOORGEVEL

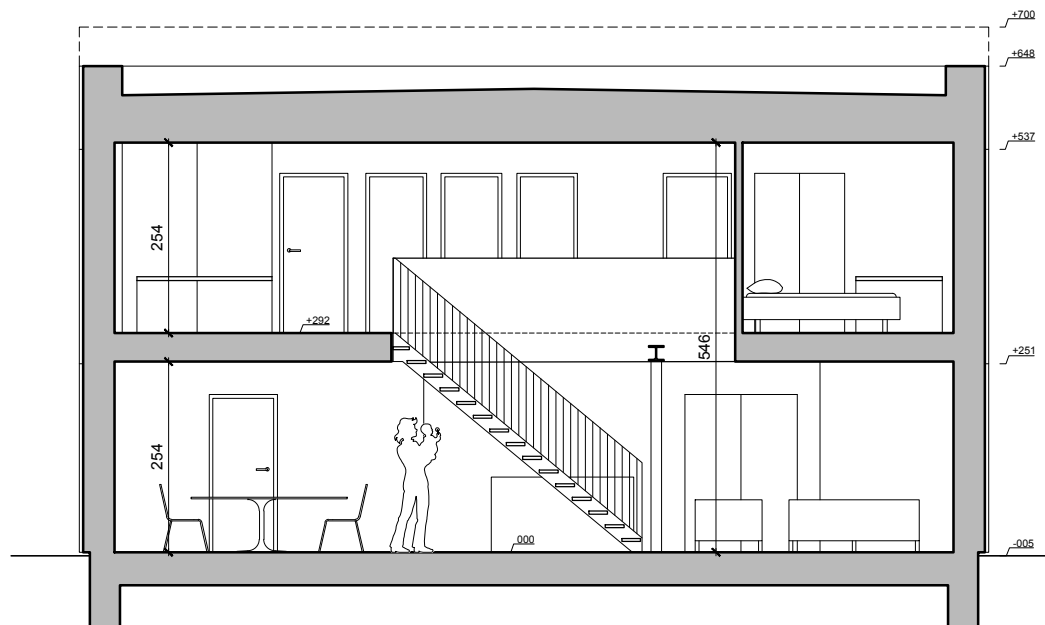


ACHTERGEVEL

- 1 gevelbekleding voor- & achtergevel: houten latten met open voegen
- 2 gevelbekleding kopse gevels: gevelpleisterwerk
- 3 aluminium buitenschrijnwerk, kleur grijs

WONING A4



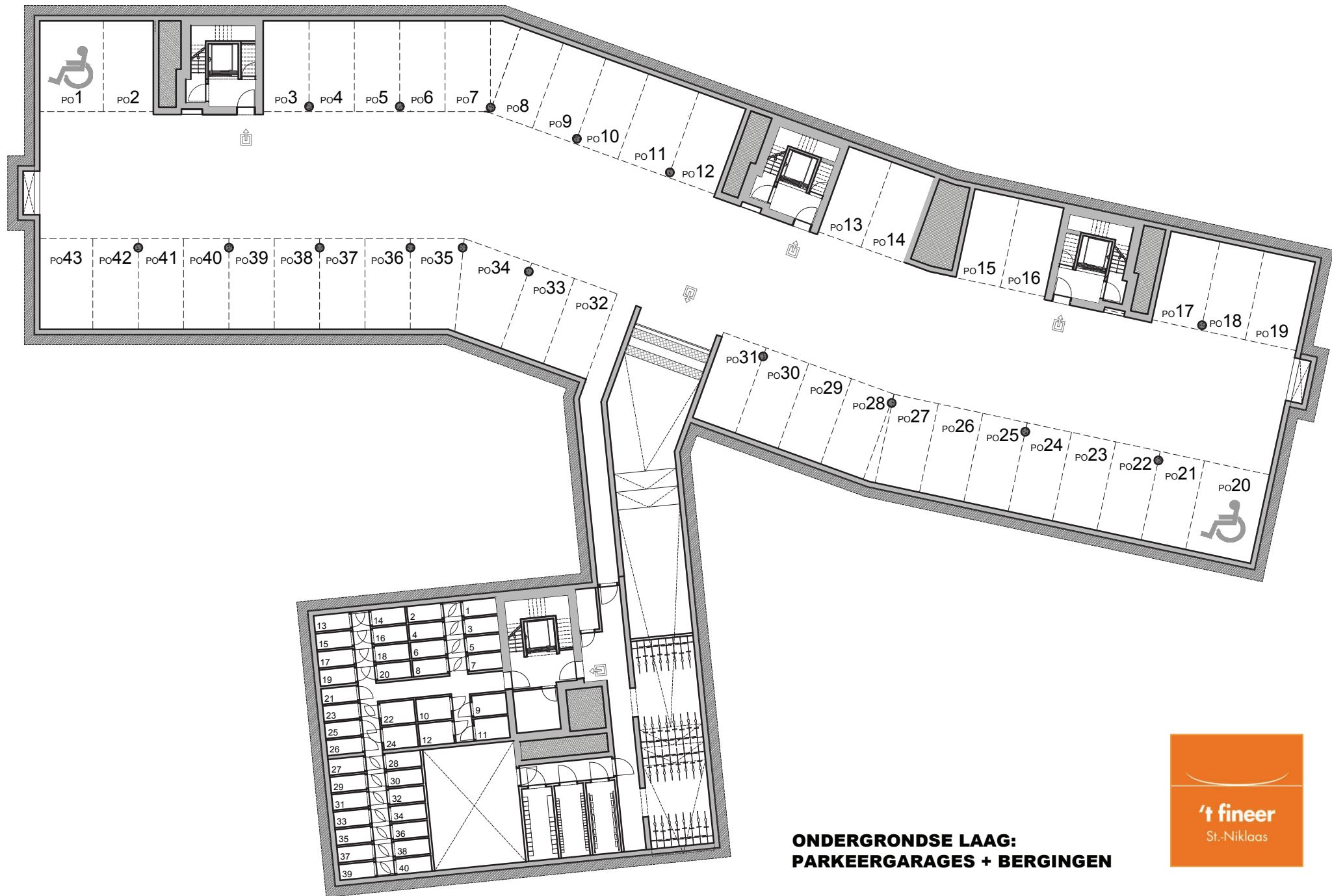


DOORSNEDE

- 1 gevelbekleding voor- & achtergevel: houten latten met open voegen
- 2 gevelbekleding kopse gevels: gevelpleisterwerk
- 3 aluminium buitenschrijnwerk, kleur grijs

WONING A4





**ONDERGRONDSE LAAG:
PARKEERGARAGES + BERGINGEN**

